

APPROVED: **Sep 11, 2017**  
COPERNICUS GROUP IRB



## SYNCHRONIZE

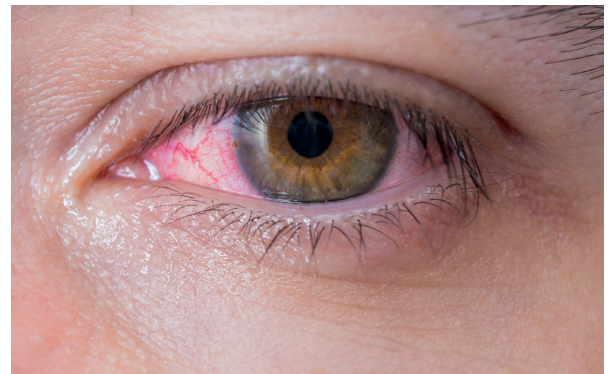
A PROGRAM OF ADENOVIRAL AND  
BACTERIAL CONJUNCTIVITIS STUDIES

# Do you think you may have conjunctivitis (pink eye)?

Research studies are now enrolling. Adults and children of any age may be able to take part if they have pink eye symptoms (e.g. redness, watering), which must have started **within the past 3 days**.

Study participants may receive:

- all study-related care at no cost
- reimbursement for study visit travel expenses
- an investigational medication for pink eye



Study participation will last for up to 13 days and will require five visits to the study center. Contact your local study center to learn more.